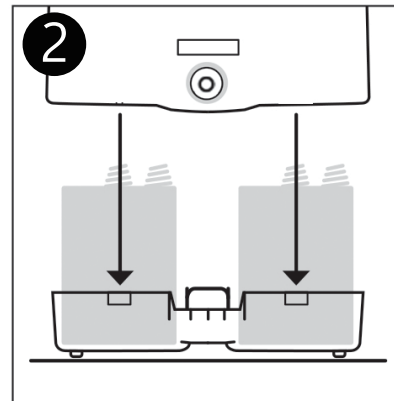




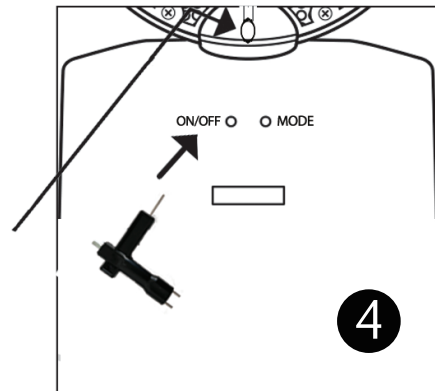
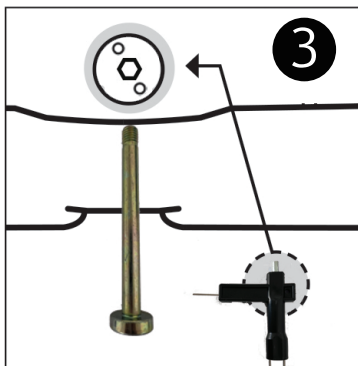
OPERATING INSTRUCTIONS

STEP1: Remove base of lamp by depressing casing on both sides under clips and pull down.

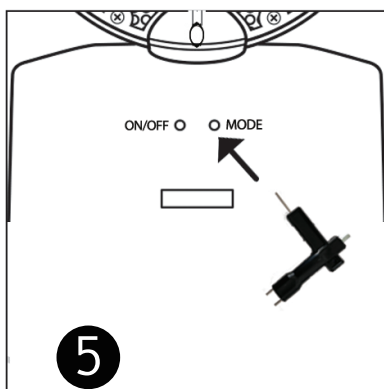


STEP2: Place 2x6V Batteries in base unit [pins up] and re-attached base to top of unit (click-in)

STEP3: Screw the metal bolt into the hole and complete with the help of the multi-function key.



STEP4: Use key provided, insert into LHS button hole.
Switch: depress once-ON;
depress again-OFF



STEP5: Use key provided, insert into RHS button hole.
Two modes of conversion: steady and flashing.